

# MYBESTCASE

INDIRECT

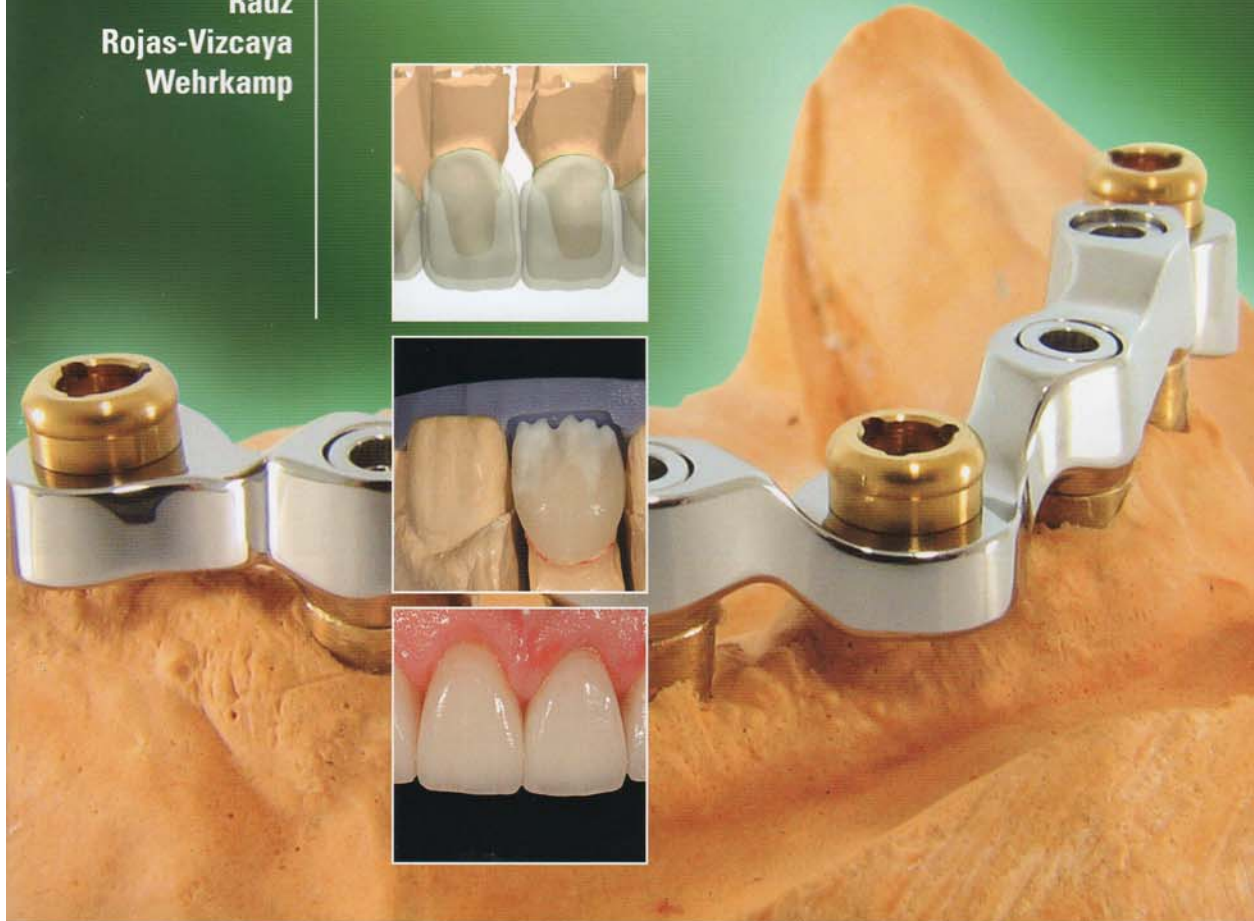
Vol. 2

Winter 2008

**Alwan  
Griffin  
Hoofard  
Kahng  
Klim  
Kouvaris  
Lerner  
Mahn  
Osario  
Petrungaro  
Radz  
Rojas-Vizcaya  
Wehrkamp**

## Featured Highlights:

- Digitally Designed Restorations: CAD/CAM Technique for Predictable Aesthetics
- Natural Integration of a CAD/CAM-Fabricated Full-Coverage Anterior Crown
- Combination Restoration of Aesthetically Compromised Anterior Maxillary Dentition



A Supplement to a Montage Media Corporation Publication

## Eating Disorder Smile Rehabilitation With All-Ceramic Porcelain Restorations

**Smile deficiencies** evident after years of degradation from acidic regurgitation resulted in poor height-to-width ratios, spaces, and discoloration.

**Chairside CAD/CAM restorations** (CEREC, Sirona, Charlotte, NC) were selected to provide aesthetic restorations in a single day using **basic smile design principles**, a cosmetic mock-up, and porcelain customization.

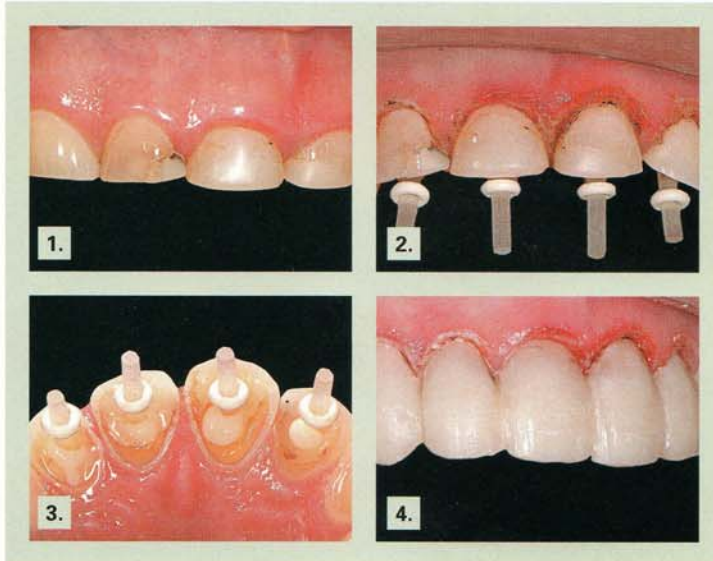
A stable platform was created first with **laser soft-tissue crown lengthening and endodontic post placement** prior to porcelain restoration.



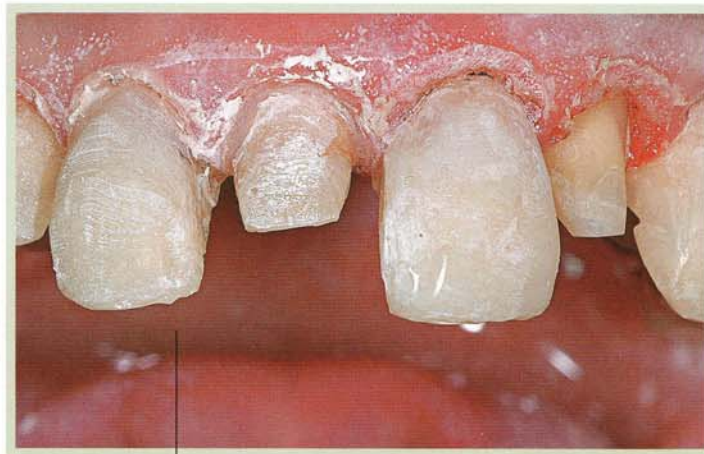
**Jack D. Griffin, Jr., DMD**

\*Private practice,  
Eureka, Missouri.

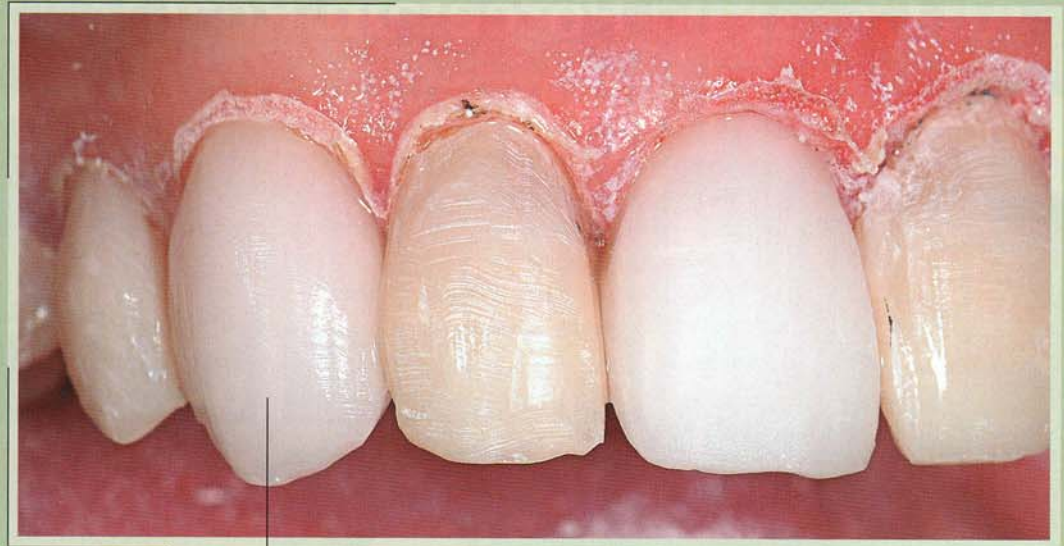
18 Hilltop Village Center Drive  
Eureka, MO 63025  
Tel: 636-938-4141  
E-mail: esmilecenter@aol.com



1. Note the irregular tissue heights and severe wear and discoloration as a result of acidic regurgitation.
2. Endodontic therapy was completed, and the soft tissues were sculpted with a diode laser prior to try-in of the aesthetic posts.
3. The canals were etched and bonded, a luting material was injected into the canals, and the posts were seated.
4. Care was taken to create teeth with proper height to width ratios slightly overbulked for porcelain finishing later.



5. CEREC design mode Correlation was chosen.



6. Milled all-ceramic restorations were created and seated for teeth #6 and #8.

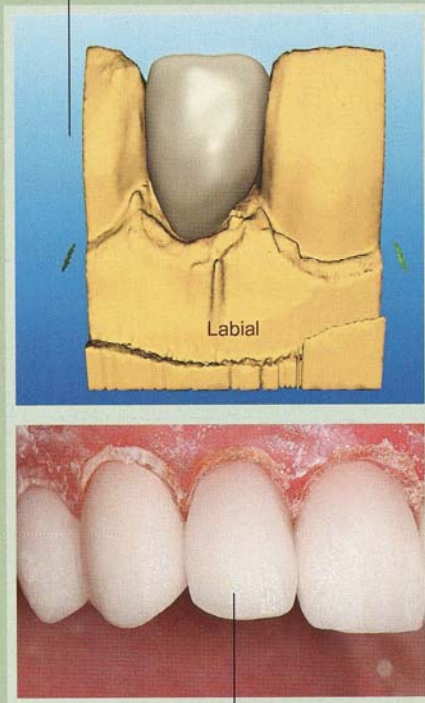


7. The teeth were powdered and scanned by CEREC 3D (Sirona, Charlotte, NC).

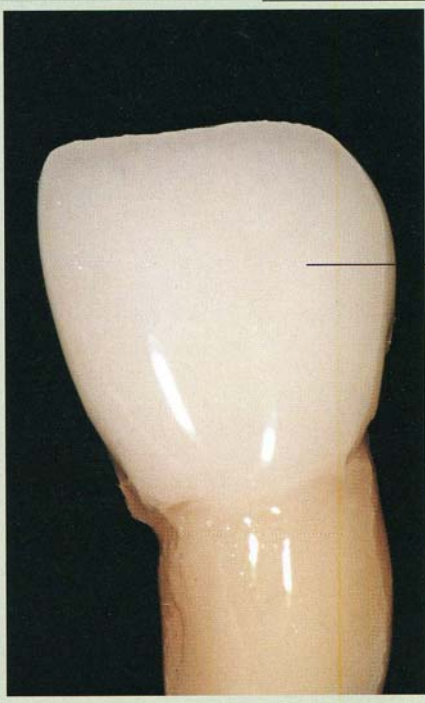


8. Tooth preparation was consistent with other all-porcelain systems, with 1.5 mm reduction, no sharp line angles, and well-defined margins.

9. The restoration was designed using the information that was transferred from the mockup and preparation scan.



10. Once milled, the crown was tried in and checked for marginal fit and adequate contact. Refining of anatomy was then performed with a fine diamond under copious water irrigation.



11. Once all crowns are milled and fit, incisal areas were cut back slightly with irregular grooves to allow placement of a translucent porcelain shade.



12. While many treatment options exist for smile rehabilitation, chairside CAD/CAM systems provide the clinician with a predictable method for enhancing aesthetics.